

KCM MT4-Windows 操作指南

KCM MT4-Windows Operation Guide

请先在下载页面下载 **KCM MT4 Windows 版本**

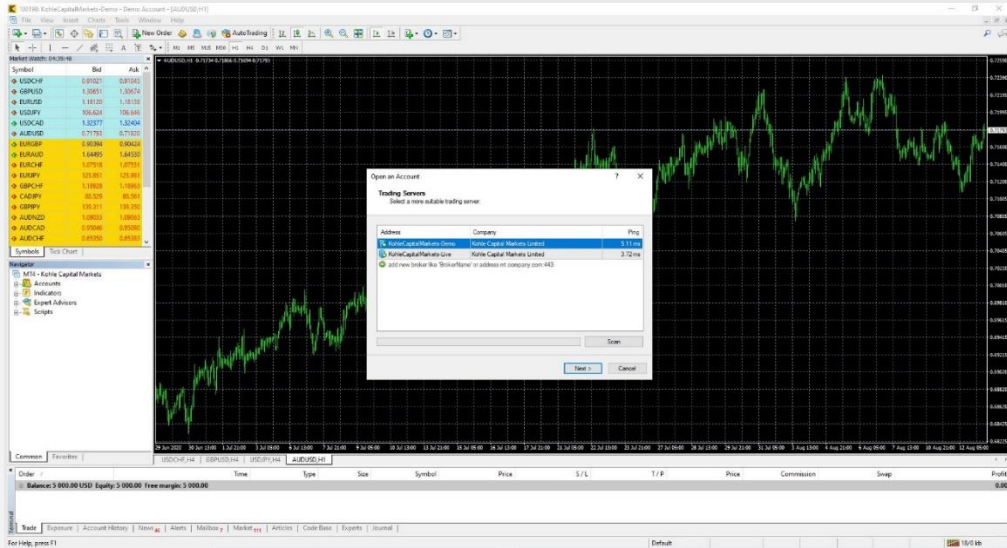
Download link for KCM MT4 platform

中文: <https://www.kohlecap.com/trade/download-mt4.html>

ENG: <https://www.kohlecapital.com/trade/download-mt4.html>



安装后， 打开 MT4 程序 > 选择「KohleCapitalMarkets-Live」> 按「下一步」
Open MT4 program after installation > Select "KohleCapitalMarkets-Live" > Press "Next"



选择「使用现有交易账户」> 输入交易账号和主密码 > 按「完成」

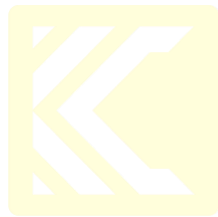
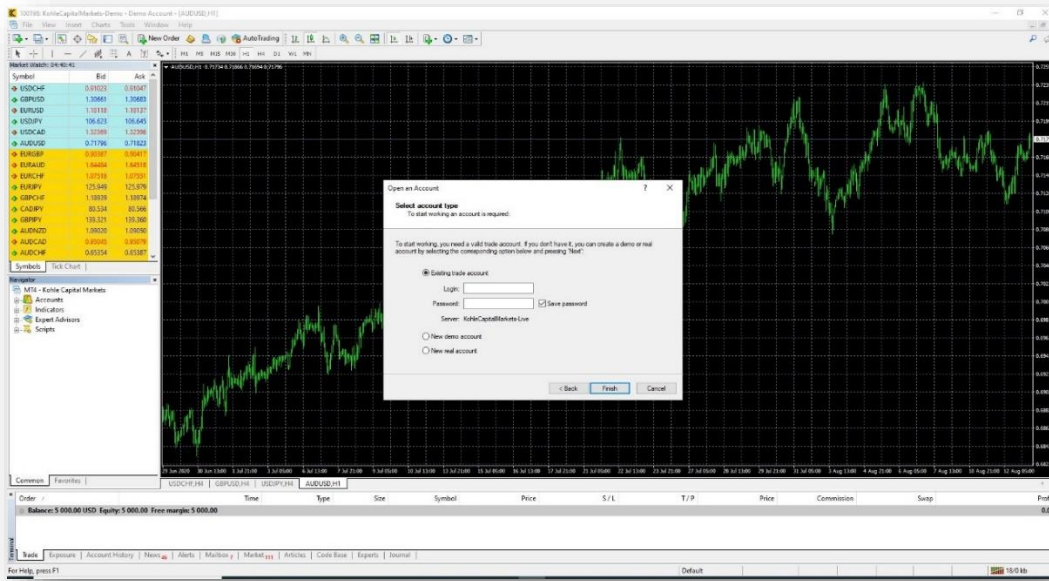
(*初始密码, 请在注册邮箱中查看)

Select "Existing Trading Account" > Enter the trading Account number and Password >
Click "Finish" to proceed

(*Default Password is attached in the registration email)



KOHLE CAPITAL
MARKETS



KOHLE CAPITAL
MARKETS

Copyright© reserved Kohle Capital Market

China Customer service: 400-842-7739

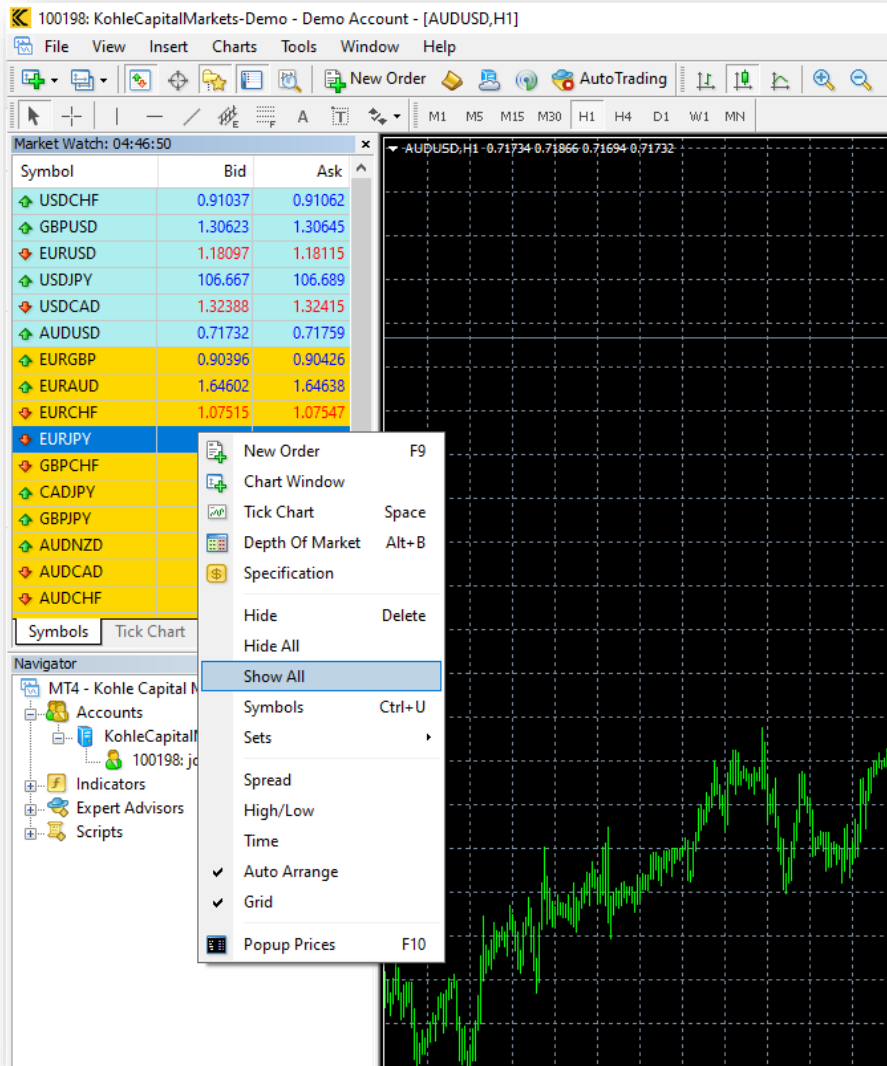
Email: CS@kohlecapital.com

「显示全部产品」

用鼠标在交易品种， 栏按快捷「全部显示」

[To Display all Trade Pairs]

Right click on the "Symbols" Section, select "Show All"

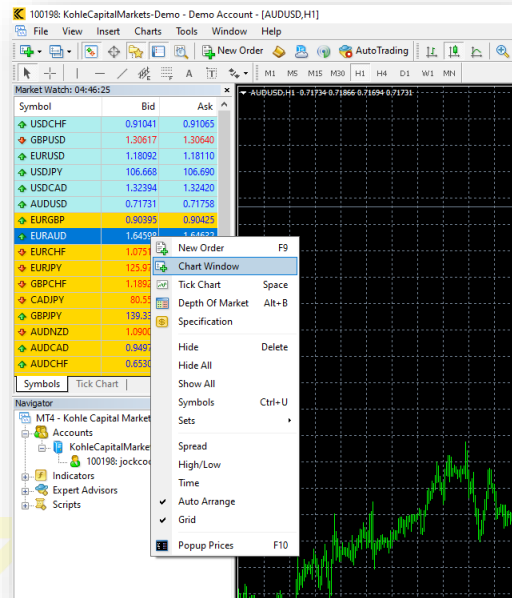


「显示图表」

用鼠标在交易品种栏选择产品，后按鼠标“图表窗口”

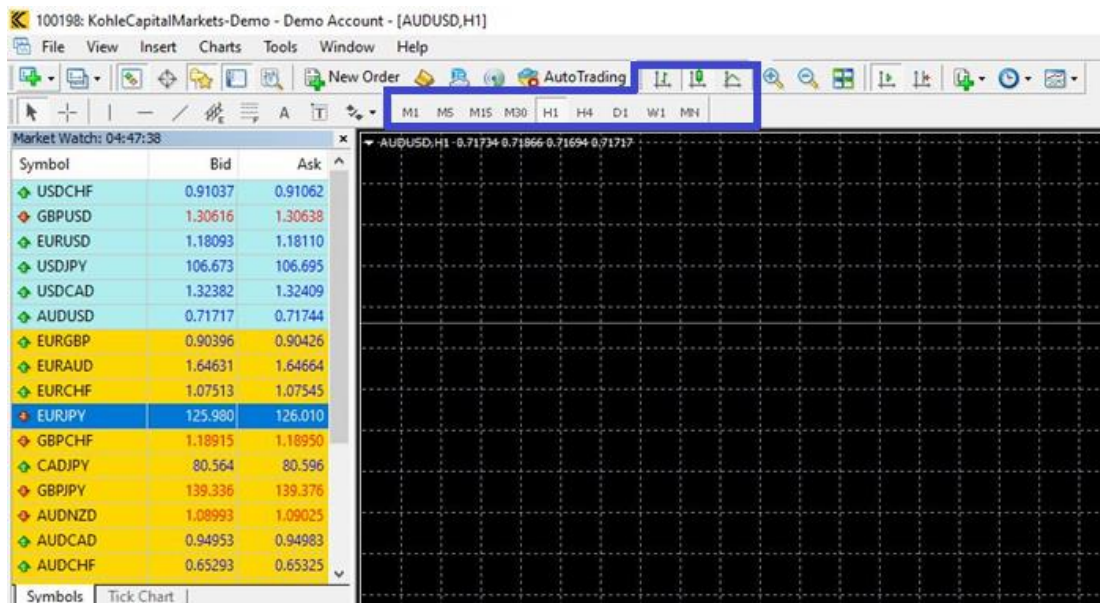
[To Display Charts]

Right click on the “Symbols” Section, select "Chart Window"



打开图表后可选择使用 K 线图，柱状图或折线图。也可转换图表周期

You can choose to use candlestick chart, bar chart or line chart. Chart period can also be converted.

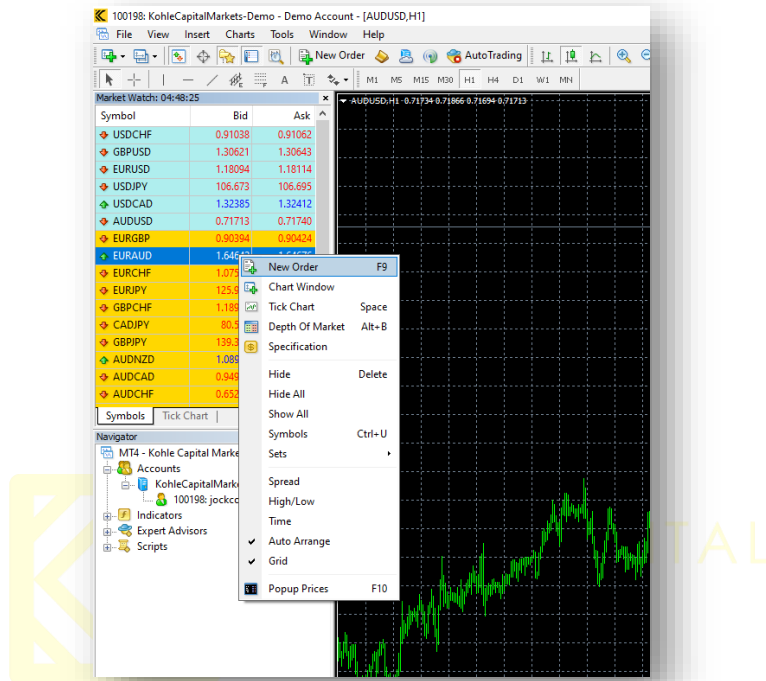


「下单交易」

用鼠标在交易品种栏选择产品，后按鼠标「新订单」

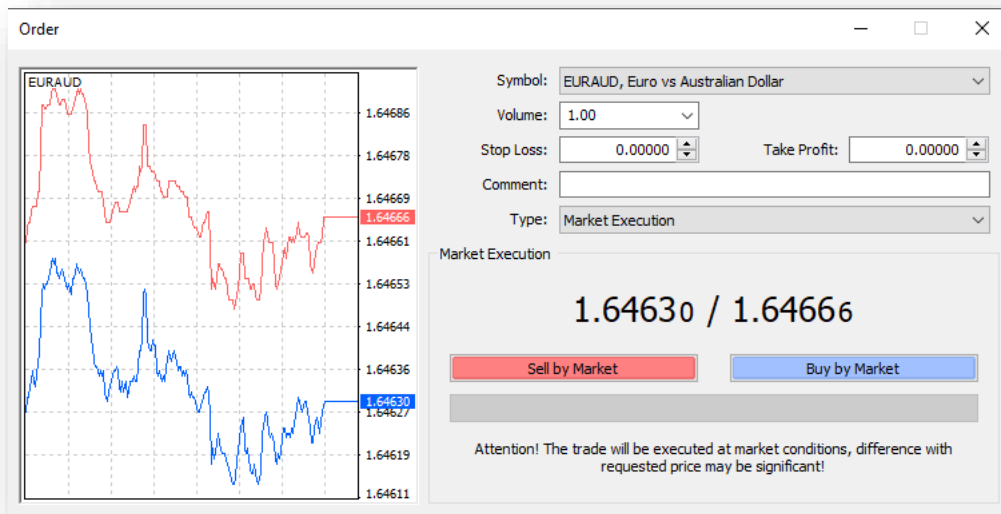
[Open a Position]

Right click on the “Symbols” Section, select "New Order"



可在订单框架内进行即时市场交易，设置下单手数，止盈止损价和挂单交易

Positions can be opened within the order frame, setting for the number of orders placed, the stop profit and stop loss price and pending order



「查询帐户状态」

可在 MT4 版面下方的“交易”查看帐户状况，包括即时交易状态，帐户历史，日志，帐户余额等

[Account status Checking]

You can view account status in the Terminal Area at the bottom of the MT4 page, including Opened Positions status, Account history, Account balance, etc.



「查询保证金比例」

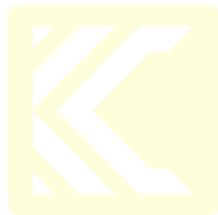
平台显示的预付款比例，即为客户的保证金比例，一旦该数字低于 50%，您的所有订单即会被强平，请时刻注意您的保证金水平不要过低，避免强平发生。

[Margin Level Checking]

Once your margin level is lower than 50%, all your opened position will be closed enforcedly, please keep an eye on this level at always.

Order /	Time	Type	Size
103150	2021.01.11 12:40:02	buy	0.10
Balance: 91.45 USD Equity: 90.05 Margin: 30.41 Free margin: 59.64 Margin level: 296.16%			

Trade | Exposure | Account History | News | Alerts | Mailbox 10 | Market | Signals | Articles 9 | Code Base



KOHLE CAPITAL
MARKETS